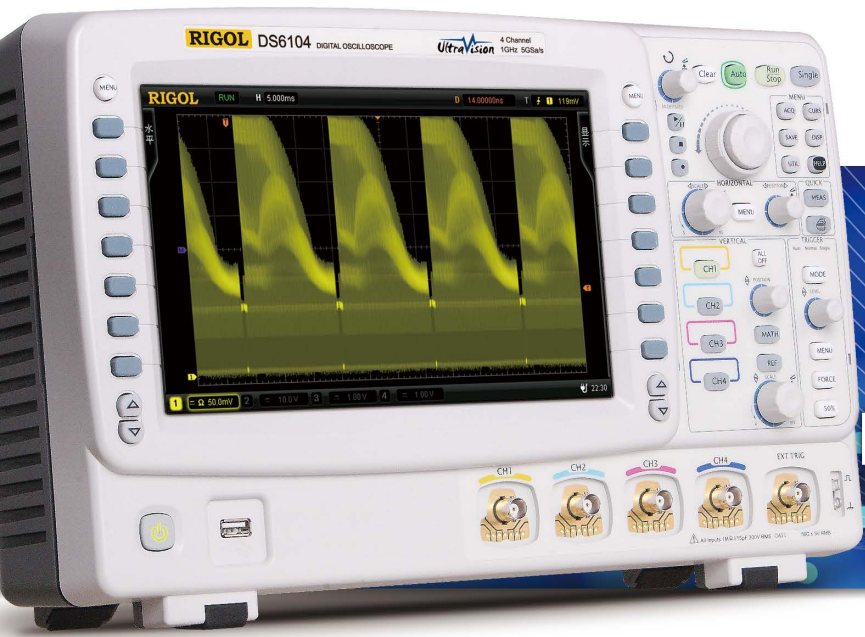




0
1 **No.2**
0
2



DS6000 Series Digital Oscilloscope

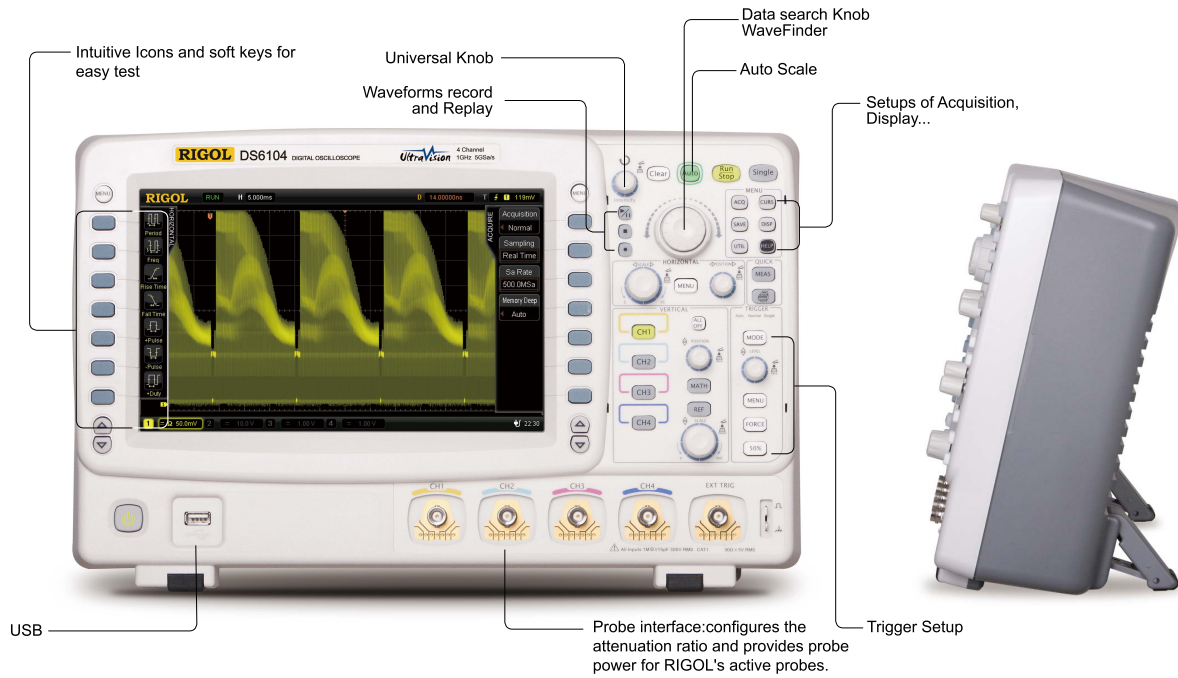
- Bandwidth 1 GHz, 600 MHz
- Sample Rate Up to 5 GSa/s
- Channels 2 or 4
- Memory 140 Mpts (Standard)
- Acquisition rate Up to 120,000 waveforms per second
- Waveform recording Up to 180,000 frames
- Innovative "UltraVision" technology
- A variety of Trigger functions and Automatic measurements with statistics
- Support serial bus trigger and decode
- Dedicated data search knob" WaveFinder "
- Complete Connectivity USB, LAN(LXI-C), WVGA , GPIB(Option)...
- Built-in 1GBytes Flash Memory
- Battery power option

RIGOL DS6000 series is designed to aim at the requirements of the largest digital Oscilloscope market segment from the Communications , Semiconductor, Computing, Aerospace Defense ,Instrumentation, Research/Education ,Industrial Electronics, Consumer Electronics and Automotive industries with its innovative technology, industry leading specifications, powerful trigger functions and broad analysis capabilities.

RIGOL TECHNOLOGIES, INC.



DS6000 Series Digital Oscilloscope



Product Dimensions: Width×Height×Depth = 399mm×255.3mm×123.8mm Weight:4.05 kg (without battery)

► Key features of DS6000 series

1. Industry-leading specifications

- Up to 1GHz BW with 5GSa/s sample rate
- Standard 140Mpts deep memory
- Up to 120,000 waveforms per second acquisition rate
- Up to 180,000 frames for waveform record and replay

2. Innovative UltraVision technology

- Deeper memory, higher waveform acquisition rate
- Up to 256 levels intensity grading
- Real time waveform record and replay
- Customized real time hardware filters(LPF,HPF,BPF,BRF)

3. Broad applications

- A variety of Trigger functions and Automatic measurements with statistics
- Serial bus trigger and decode such as I2C, SPI, RS232, CAN...
- Advanced math function
- Complete Connectivity
- A variety of Probes and accessories

4. Attractive profile

- Large display: 10.1 inch WVGA (800x480), LED backlight
- Shallow depth: reduces the space occupied
- Light weight: easy for hand carry even with battery power option

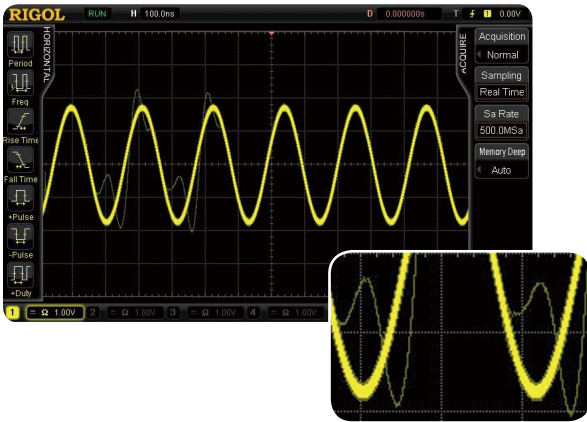
Model	DS6104	DS6102	DS6064	DS6062
Bandwidth	1 GHz	1 GHz	600 MHz	600 MHz
Max. Sample rate	5 GSa/s	5 GSa/s	5 GSa/s	5 GSa/s
Memory(Standard)	140 Mpts	140 Mpts	140 Mpts	140 Mpts
Channels	4	2	4	2
Acquisition rate	Up to 120,000 waveforms per second			
Frames recorded	Up to 180,000 frames			

► Recommended RIGOL probes

Model	Descriptions
RP5600	600MHz Passive probe
RP7150	1.5GHz differential/single ended active probe(Optional)

► Features and Benefits

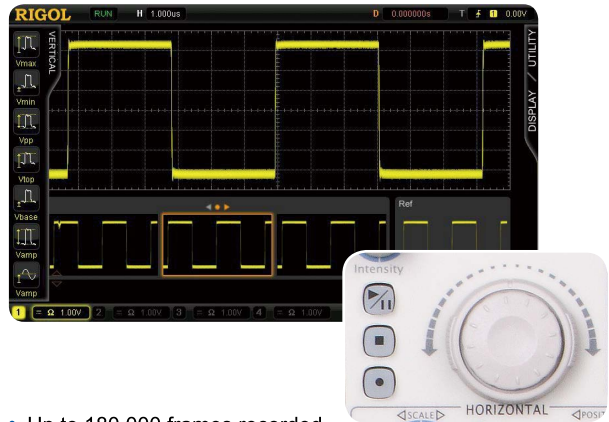
RIGOL's innovative UltraVision technology



- Deeper memory, higher waveform acquisition rate
- Up to 256 levels intensity grading
- Real time waveform record and replay
- Customized real time hardware filters(LPF,HPF,BPF,BRF)

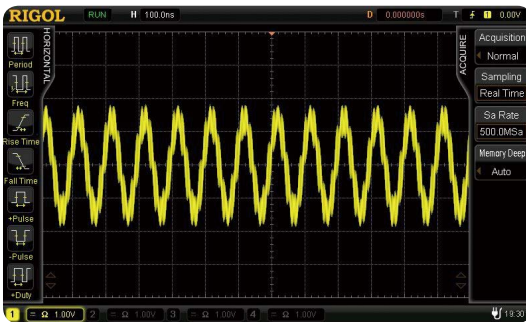
UltraVision

UltraVision---Real time waveform record and replay

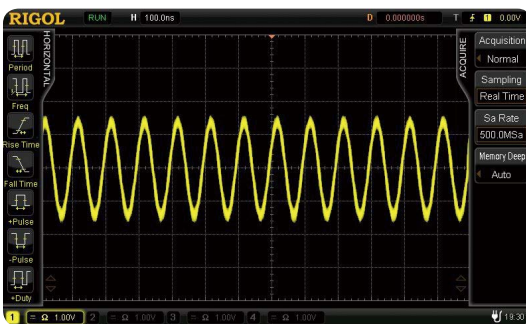


- Up to 180,000 frames recorded
- "WaveFinder"--Dedicated data search knob
- Replay and analyze the recorded waveforms

UltraVision: The customized real time Hardware filters(LPF,HPF,BPF,BRF)

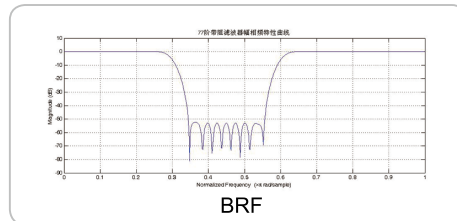
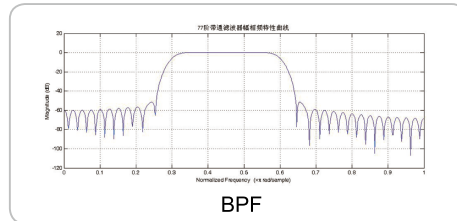
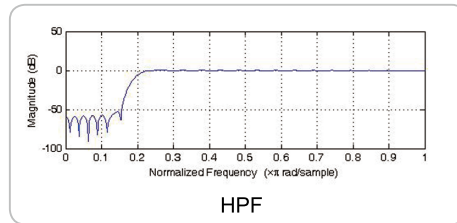
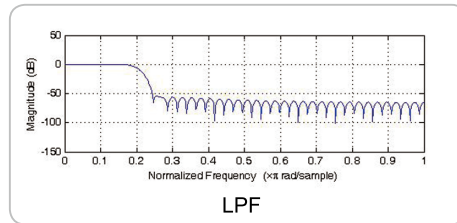


The signal with significant noise



The cleaner waveform with hardware filtering
Hardware filter is faster than the data post processing filter

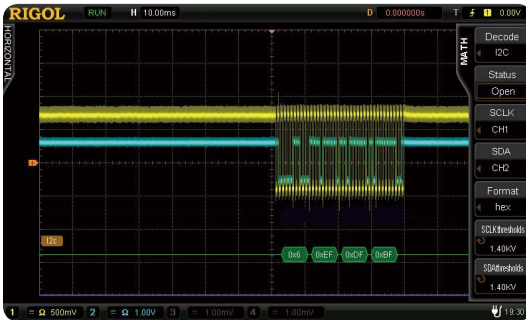
Customized Hardware filters



A variety of Trigger functions

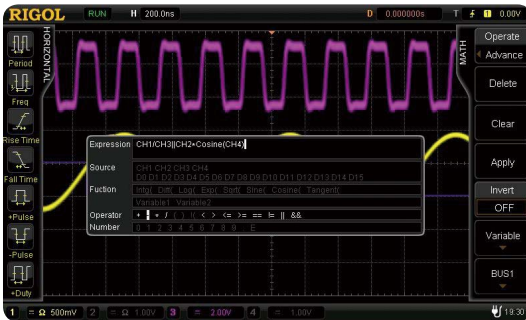
- Edge
- RS232/UART
- USB
- FlexRay
- CAN
- I²C
- SPI
- Glitch
- Sequence
- Pattern
- Video
- Pulse width
- Slew rate

Serial bus decoding functions

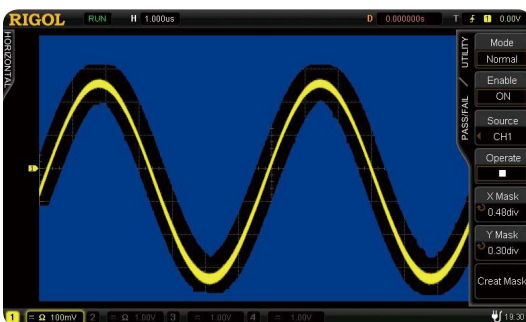


- I²C Decoding
- RS232 Decoding
- SPI Decoding
- USB Decoding
- CAN Decoding
- FlexRay Decoding...

Advanced math function (user defined)



Mask test functions



Automatic measurements with statistics

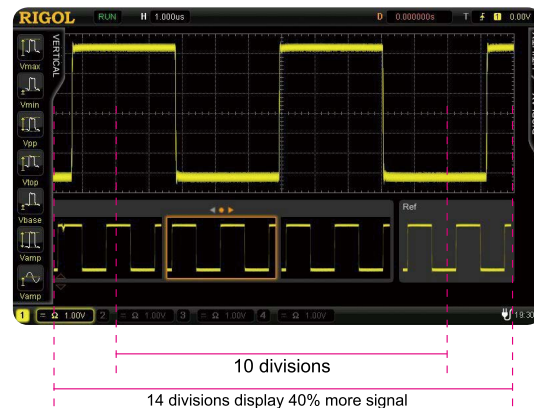
- Automatic measurements for Horizontal and vertical parameters
- Display up to 5 measurement items with statistics simultaneously
- Display all measurement items with the current value in the screen
- Intuitive icon and soft key operation for simplified testing

Complete Connectivity



- Trigger output and calibration signal output
- 10MHz In/Out: 10MHz reference clock IN/OUT
- VGA: Connect to an external monitor or projector
- LAN: For remote control (LXI-C compliant)
- USB: 2 USB HOST ports and 1 USB DEVICE port provide PC, Flash drive, and printer connectivity
- Supports the optional USB-GPIB adapter

Observe more signal on our wider innovative display with 14 horizontal divisions



The innovative wider display with 14 horizontal divisions

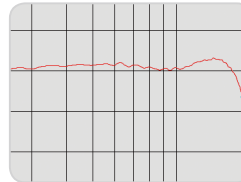
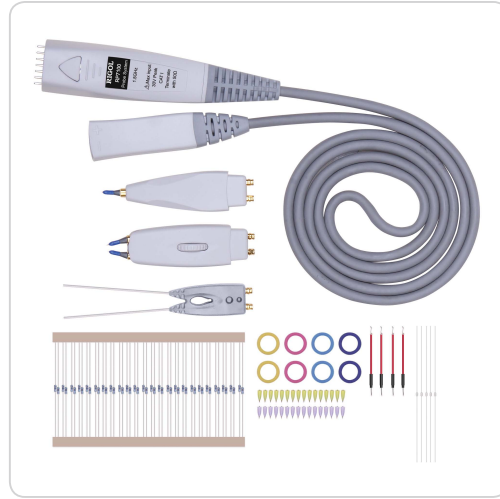
► Probes

RP5600 10:1 divider passive probe

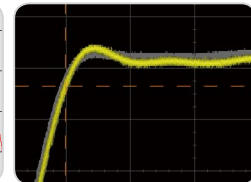


- 600MHz Bandwidth
- 10:1 passive probe
- Shipped with probe positioner and its accessories
- Identified by DS6000 automatically

RP7150 1.5GHz BW active probe (optional)



Frequency response curve



Excellent signal fidelity

- 1.5GHz Bandwidth
- Active probe supports both differential and single-ended measurements
- Shipped with the browser probe head
- Provides many kinds of probe connection accessories
- Identified by DS6000 automatically

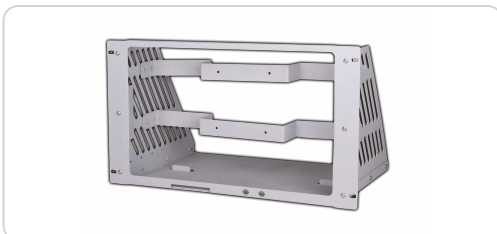
► Other accrssories



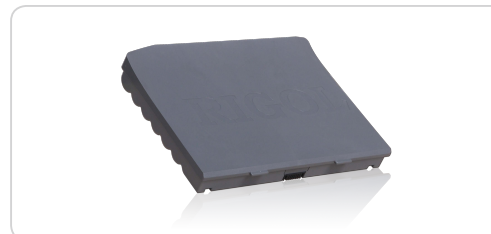
ARM option



Optional USB-GPIB adapter for remote control



Rack mount kit option



Batter power option

RIGOL

SIGNAL TEST™
New & Used Test Equipment

Distributed by:
www.SignalTestInc.com <<http://www.SignalTestInc.com>>
1529 Santiago Ridge Way
San Diego, CA 92154 USA.
Sales@SignalTestInc.com

For further information, please contact
Rigol local Distributors

www.rigol.com